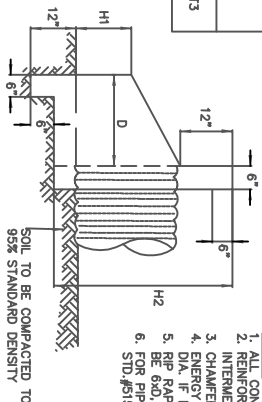


INLET HEADWALL

FRONT ELEVATION

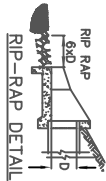
STONE & FILTER MATERIAL: RIP RAP			
VELOCITY	STONE SIZE	FILTER MATERIAL	
<6 FT/SEC	10 - 90 LBS.	1.5"	
6 TO 8 FT/SEC.	20 - 100 LBS.	3"	
8 TO 10 FT/SEC.	25 - 250 LBS.	4.5"	
STONE OF DURABLE MATERIAL WEIGHING 150 LBS./FT ³			



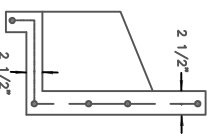
NOTE: AN ALTERNATE DESIGN FOR THE ENERGY DISSIPATOR WOULD BE ACCEPTABLE ONCE APPROVED BY FULTON COUNTY

SIDE VIEW

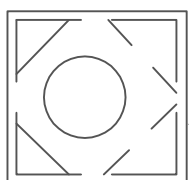
- NOTES:
1. ALL CONC. SHALL BE 4000 P.S.I.
 2. REINFORCEMENT STEEL SHALL BE #8 AT
 3. INTERMEDIATE SPACES 3"
 4. ENERGY DISSIPATOR EDG. OF PIPES OVER 30" DIA. IF EXIT VELOCITY > 8 F.P.S.
 5. RIP RAP TO BE PLACED AT OUTLET, LENGTH TO BE 6xD, WIDTH TO BE 3xD.
 6. FOR PIPES LARGER THAN 54" USE FULTON CO. STD. #915 OR G.D.O.I. STD. #1125.



RIP-RAP DETAIL

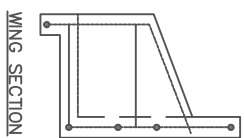


BASE & WALL SECTION

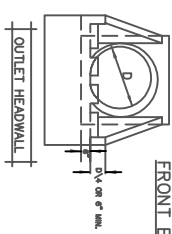


WALL SECTION

NOTE: HEADWALLS OVER 30" TO HAVE STEEL ON 6" CENTERS EACHWAY (2" CLEARANCE TOP)

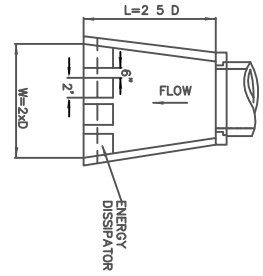


WING SECTION

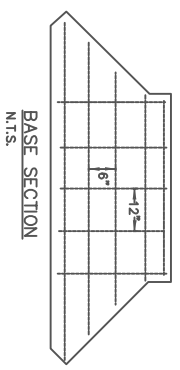


FRONT ELEVATION

PLAN VIEW



ENERGY DISSIPATOR



BASE SECTION
N.T.S.

TABLE 1
HEADWALL DIMENSION FOR METAL PIPE*

INSIDE DIA. OF PIPE	W1	W2	H1	H2	D	E	WT.	SQ. FT. IN BASE AREA
18"	3' - 2"	4' - 3"	1' - 3"	3' - 2"	1' - 3"	1' - 9"	1,550	7.34
21", 24"	3' - 8"	5' - 3"	1' - 9"	3' - 8"	1' - 6"	2' - 7"	2,100	9.9
30"	4' - 2"	6' - 5"	2' - 0"	4' - 2"	1' - 10"	2' - 9"	2,850	13.5
36"	4' - 8"	7' - 7"	2' - 4"	4' - 8"	2' - 2"	3' - 3"	3,700	17.65
42", 48"	5' - 8"	10' - 1"	3' - 3"	5' - 8"	2' - 11"	4' - 3"	5,600	28.6
54"	6' - 8"	11' - 11"	3' - 3"	6' - 8"	3' - 4"	5' - 3"	7,500	35.6

FULTON COUNTY STANDARD DETAIL 514

PRECAST CONCRETE
HEADWALL SYSTEM
(INLET & OUTLET HEADWALLS)

DATE	REVISIONS	DATE	REVISIONS
8/08	RC		

DGS/DRN/CHKD: GMS
APPROVED: _____
DATE: 12-2-05



FULTON COUNTY PUBLIC WORKS
141 PRYOR ST. ATLANTA, GA. 30303
404-612-7400 FAX: 404-224-0498

DRAWING NO.

514