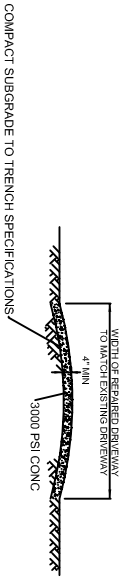
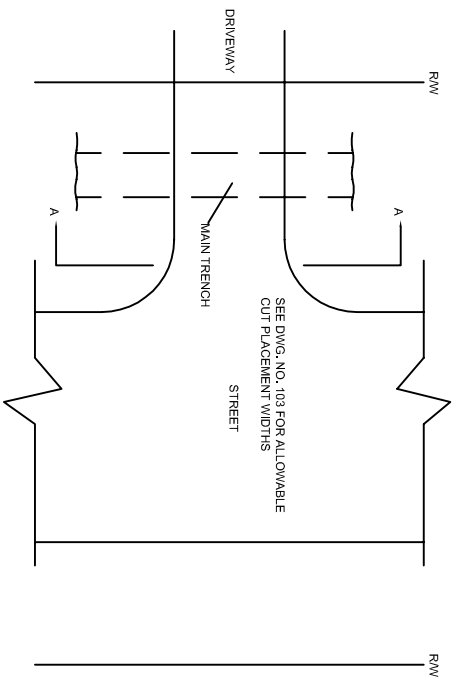
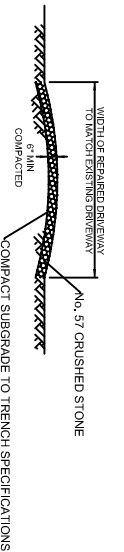


NOTE:
 1. FINISHED GRADE TO BE FLUSH WITH THE EDGE OF THE DRIVE (TYP)
 * SEE DWG. NO. 110 FOR STREET CUT REPAIRS

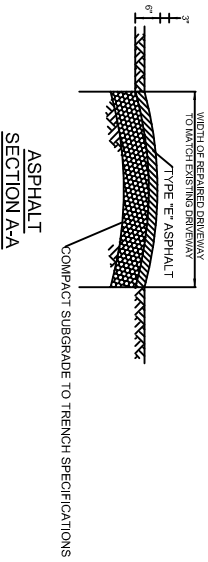


CONCRETE
SECTION A-A



GRAVEL
SECTION A-A

NOTES:
 1. FINISH SURFACE OF REPAIRED AREA TO MATCH EXISTING SURFACE
 2. EDGES OF CUT TO BE SAWN VERTICALLY
 3. EXPANSION MATERIAL TO BE USED AS DIRECTED



ASPHALT
SECTION A-A

FULTON COUNTY STANDARD DETAIL 131
 DRIVEWAY CUT REPAIRS- CONCRETE, GRAVEL & ASPHALT

DATE	REVISIONS	DATE	REVISIONS
8/08	NRR		

DGS/DRN/CHKD: GMS
 APPROVED: REW
 DATE: 12-2-05



FULTON COUNTY PUBLIC WORKS
 141 PRYOR ST. ATLANTA, GA. 30303
 404-612-7400 FAX: 404-224-0498

DRAWING NO.
 131